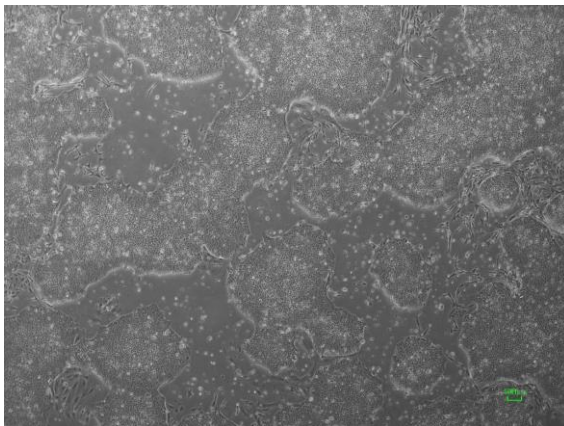


【 cira-jk-0018 】 Morphology of iPSC colonies

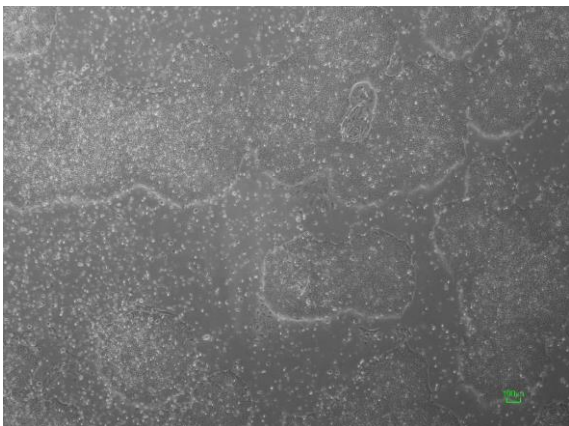
cira-jk-0018-A: passage-2



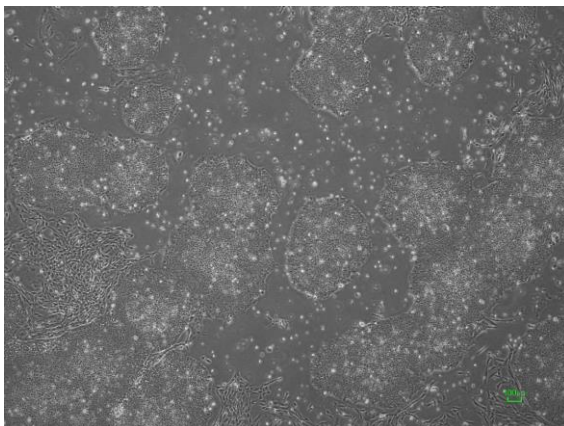
cira-jk-0018-B: passage-2



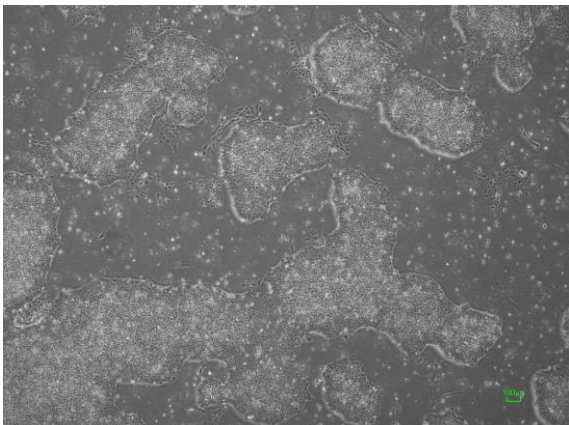
cira-jk-0018-C: passage-2



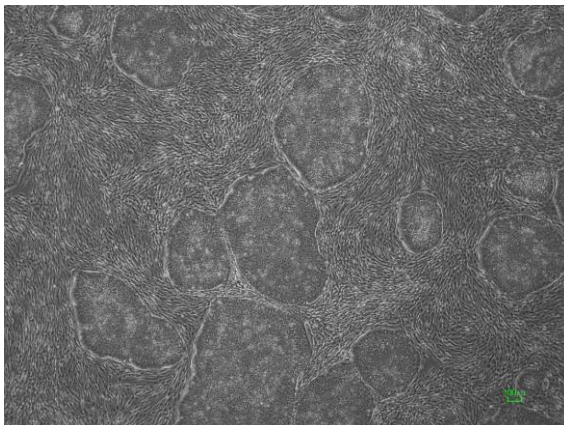
cira-jk-0018-D: passage-2



cira-jk-0018-E: passage-3



cira-jk-0018-F: passage-3



(All images were captured at 4x magnification)